



Specification

SC Simplex Adapter

Description

Fiber optic adapter is to achieve the same or different optical fiber connectors docking in optical links, make the light path connected under the small loss. It is to put the fiber of two surface precision docking, so that the optical output of light energy to the maximum coupling in the receiving optical fiber, and since it entered the optical link to minimize the effects on the system. Widely used in optical fiber distribution frame (ODF), fiber optic communications equipment, instruments, etc., superior performance, stable and reliable.

Application

- CATV
- Telecommunication networks
- Local Area Networks (LANs)
- Data processing networks
- Test equipment
- Premise installations
- Gigabit Ethernet
- Metro

Features

- Low insertion loss and back reflection loss
- High precision alignment
- Compact design
- With/Without flange
- Choice of housing material and sleeve material
- Telcordia, ANSI, TIA/EIA, NTT and JIS compliance

Specification

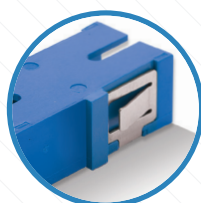
| Item | Specification |
|-----------------------|--------------------------------------|
| Insertion Loss | <0.20dB |
| Durability | <0.20dB typical change, 1000 matings |
| Operating Temperature | -40 ~ 85°C(PBT) / -25 ~ 70°C(ABS) |

Availability

| Flange Type | Welded Type | Housing Color |
|-------------|----------------------|----------------------------------|
| Flange | One Piece Adapter | SM/PC - Blue |
| No Flange | Conventional Adapter | SM/APC - Green |
| | | MM/PC - Beige/Aqua/Magenta/Black |



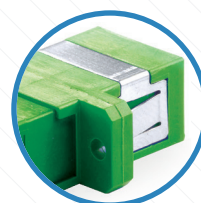
With Flange



No Flange



SC One Piece Adapter
No Weld Type



SC Conventional Adapter
Welded Type

